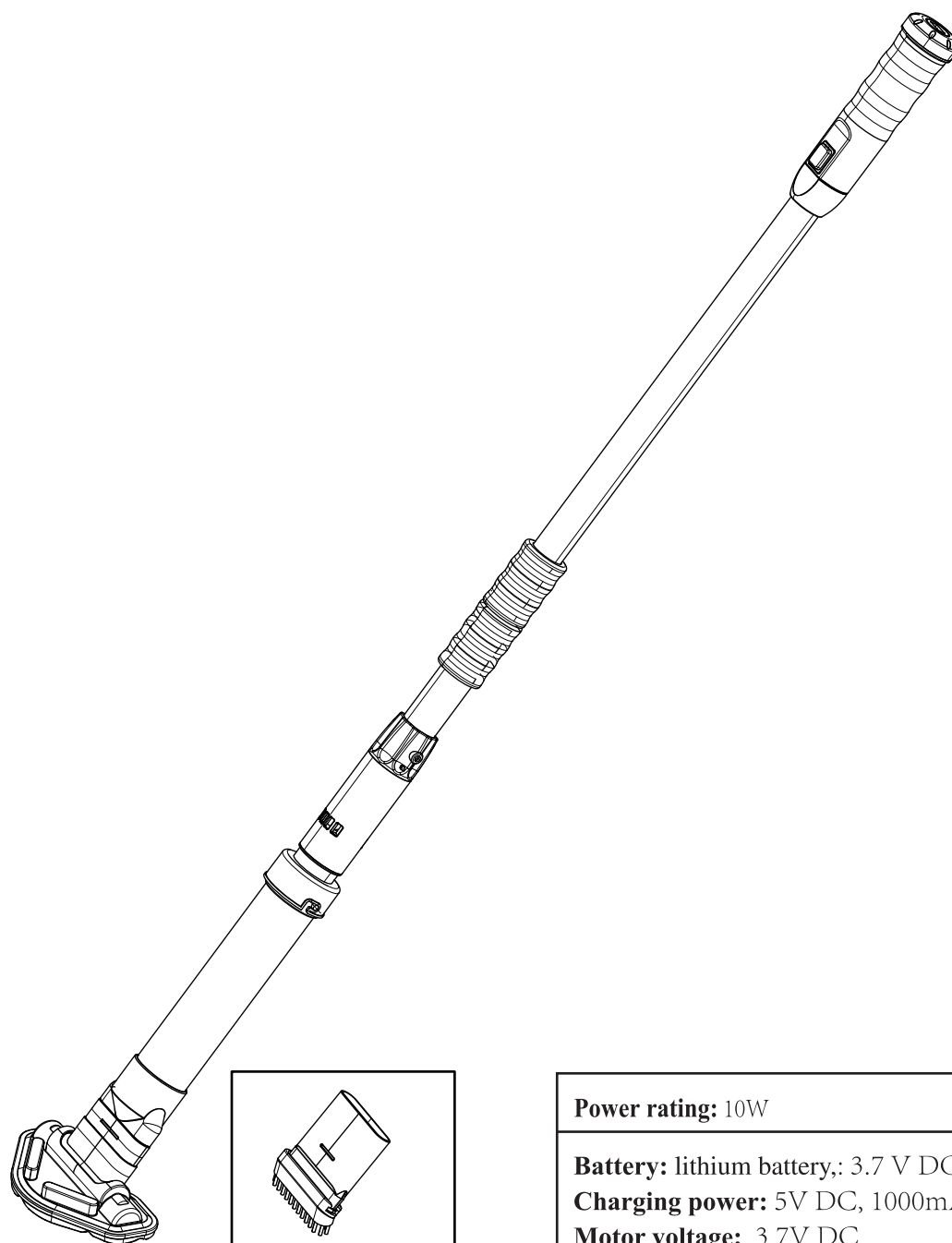


EN

# ELEK SPA 65

Rechargeable swimming pool  
and spa vacuum cleaner



P1127

**Power rating:** 10W

**Battery:** lithium battery, : 3.7 V DC, 2000 mAh

**Charging power:** 5V DC, 1000mAh

**Motor voltage:** 3.7V DC

**Capacity of filter:** 0.15L

## **SAFETY WARNING**

The cleaner is not a toy, and is operated by people older than 8 years age. Any people who operates the cleaner, has to read the manual carefully before work it.

- (1)The cleaner is designed to clean the swimming pool, SPA.
- (2)Only charging it when the cleaner is power off.
- (3)Put the cleaner into a clean and dry place. Do not expose it under the sun, or close to explosive.
- (4)The filter bag is easy to be broken when there is sharp substances under water.
- (5)Do not close to the vacuum head when it is working, due to its suction power, especially for the human body, animals, hairs or clothes.
- (6)Do not disassemble the cleaner without professional guidance or notice from the authorized distributor or manufacturer.
- (7)Do not leak the lubricant oil, and it causes water polluted.
- (8)Stop to work the cleaner when there is anything wrong; Please contact with the authorized distributor or replace it to the original parts/accessories.
- (9)Cleaner working conditions:
  - (9)-1 Water depth from 45cm to 140cm
  - (9)-2 Water temperature: 4°C( 39.2°F )-35°C( 95°F )

## **USB lane**

- (1)Only output voltage 5V is allowed for charger including USB joint;
- (2)For indoor use only. The charger should not be used outdoor and not be exposed to rain, humidity, any liquid or heat.
- (3)Keep the charger out of children.
- (4)Never use the charger if any damage is found.
- (5)Do not handle the cleaner and charger with wet hands and bare feet, when charging the cleaner.
- (6)Disconnect the charger from power when not in use.
- (7)If the USB lane is damaged, it must be replaced by a new charger to avoid danger.
- (8)Make sure the cleaner, USB lane and charger are totally dry before charging.
- (9)Charge the cleaner 4-5 hours prior to the first use. Normally cleaner can be operated about 50 minutes after fully charged.

**Above warning and cautions are not intended to incorporate all possible instances for risks and/or severe injury. Pool/spa owners should always exercise intensive caution and common sense when operating the cleaner.**

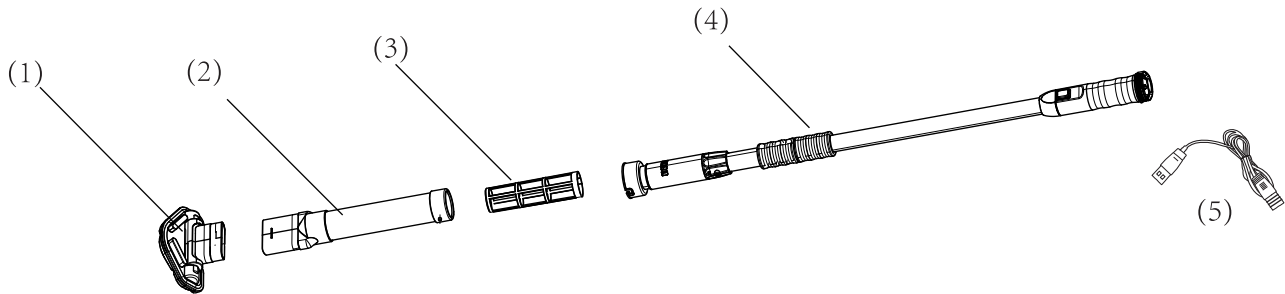
## How to use ?

### 1. How to assemble the cleaner ?

#### 1.1 Component installation

ELEKSPA 65 consists of Five main parts:

- (1) Suction head
- (2) Transparent filter
- (3) Filter bag
- (4) The telescopic poles
- (5) USB lane



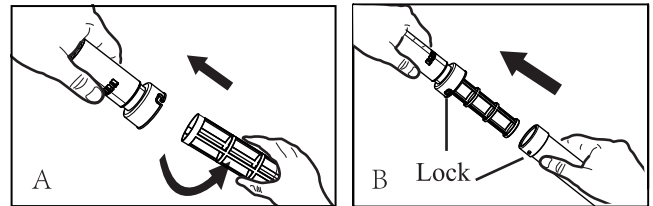
#### 1.2 Basic usage

It is only designed to clean the children pool and SPA. Improper uses may damage the cleaner, and it is not into warranty.

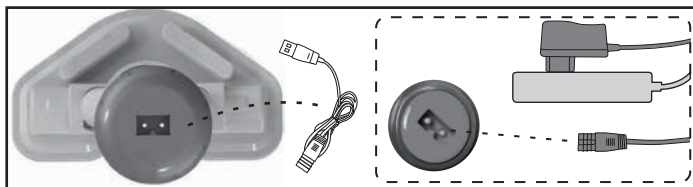
#### 1.3 Filter bag assembly

Please screw the filter bag into the bottom of the telescopic pole. [fig.A]

Sleeve the transparent filter and lock. [fig.B]



#### 1.4 How to connect with charger ?

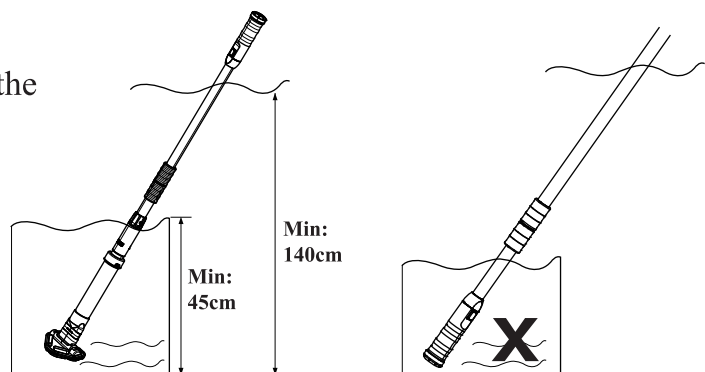
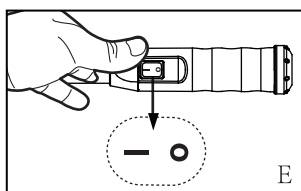


**Attention:** Charge the cleaner 4-5 hours prior to the first use. Normally cleaner can be operated about 50 minutes after fully charged.

- (1) Insert one end of the USB cable into the USB charger, and the other end of the charger into the power supply;
- (2) Plug the other end of the USB cable into the ELEKSPA65, and the product displays a red light to indicate normal charging;
- (3) Around 4-5 hours later, the light turns to green, it means the machine is full of power now.

#### 1.5 ON-OFF Button

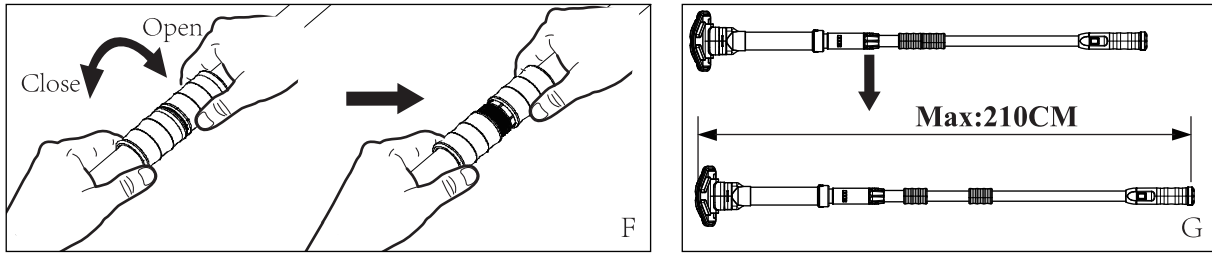
Press button "I" [fig.E], and the cleaner starts to work.



## 1.6 Telescopic poles

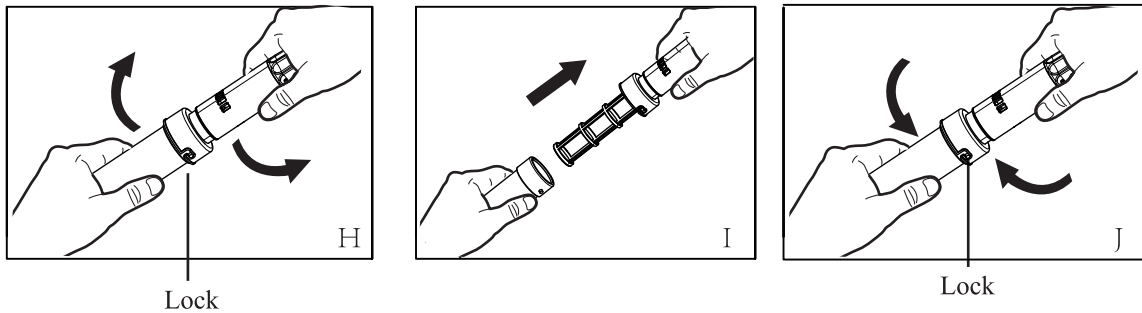
If using the telescopic poles, simply unscrew the knob on the surface counterclockwise, adjust the length as required [fig. F], the total length can reach 210CM after extension [fig. G].

**Note: Do not over extend the telescopic poles, or the internal wires loose off.**



## 2. How to clear the filters?

- (1) Turn off the switch take the suction head apart as indicted [fig.H]
- (2) Remove the filter and take out the rubbish, then clean the filter [fig.I].
- (3) Reinstall the filter bag in the main body as indicted [fig.J].



## 3. Trouble shooting

Problem	Possible Cause	Action
Cleaner doesn't work	Battery is running out	Charge the battery again. Normally cleaner can operate 50 minutes after fully charged.
	Battery is dead	Contact dealer for battery replacement. <b>WARNING!</b> When you replace the battery, please contact the local dealers to purchase the original lithium battery in case that the electric cleaner is destroyed.
Small suction	Check battery capacity	Replace new battery
	Too much rubbish in the filter	Clean the rubbish
Abnormal sound	Please check the motor impeller	Unscrew the suction and clean the foreign matter on the impeller
Cleaner cannot be recharged	Battery is dead	Contact dealer for battery replacement. <b>WARNING!</b> When you replace the battery, please contact the local dealers to purchase the original lithium battery in case that the electric cleaner is destroyed.
	The charger is damaged	Replacement of charger
	USB lane broken	Contact dealer for proper transformer. <b>WARNING!</b> Using wrong charger will result in damaging the cleaner /battery and void the warranty.

4.

## Environmental Programmes

	<p>Please respect the local regulations and help to protect the environment.</p> <p>Return non-working electrical equipment to a facility appointed by your municipality that properly recycles electrical and electronic equipment, Do not dispose them in unsorted waste bins.</p> <p>Remove batteries before disposing of the product.</p>
--	---

We reserve the right to change all or part of the features of the articles or contents of this document, without prior notice.