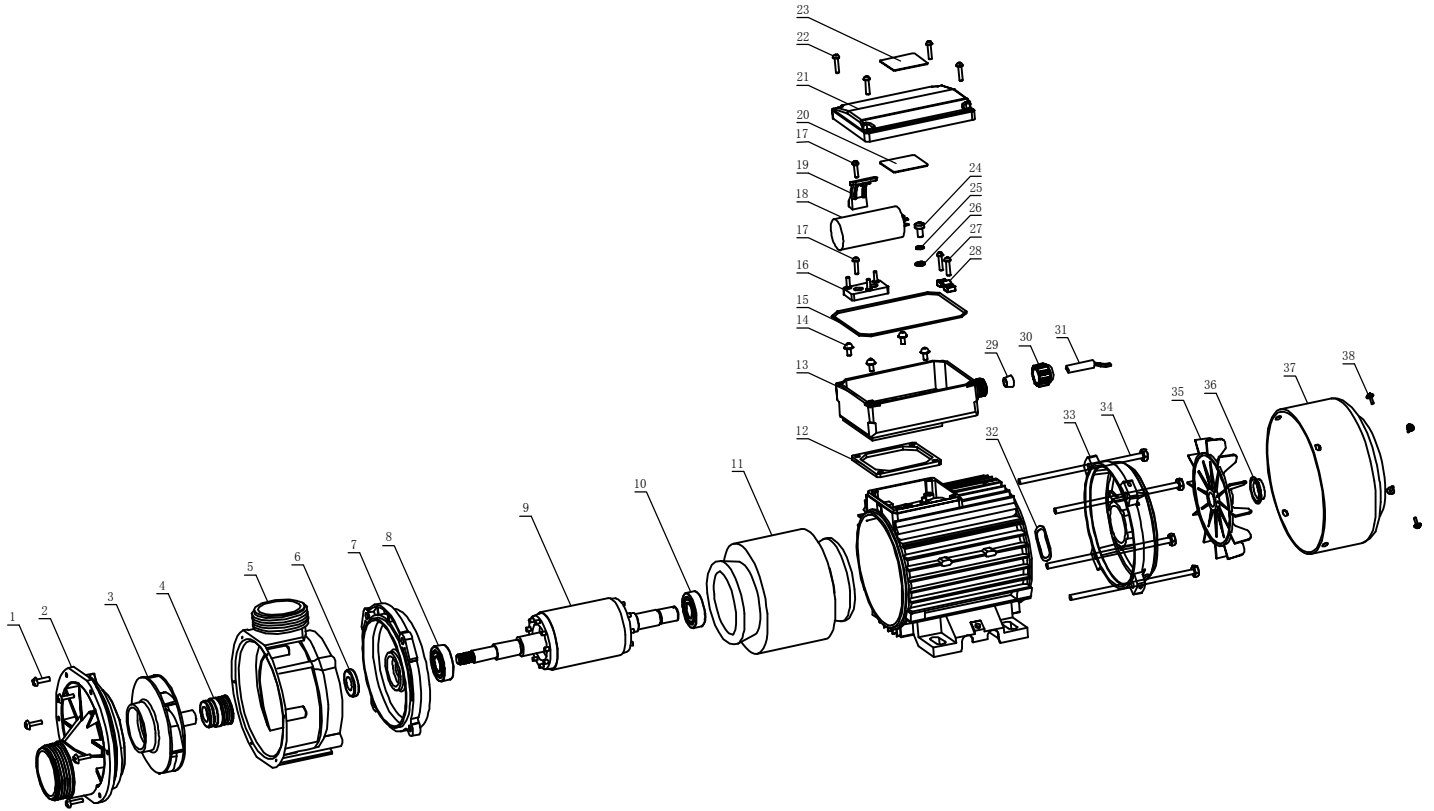


# DH1.0 浴缸泵 Bath Pump



No. 序号	Name 名称	Spec 规格	Material 材料	QTY 数量	No. 序号	Name 名称	Spec 规格	Material 材料	QTY 数量
1	十字槽盘头自攻螺钉 Cross recessed pan head thread cutting screw	M4×16	A3钢(Steel)	6	20	水泵接线图 Water pump wiring diagram		铝箔不干胶 Foil stickers	1
2	泵盖 Pump Cover		PP-GF20	1	21	出线盒上盒 Terminal Box Cover		阻燃ABS Flame Resistant ABS	1
3	叶轮 Impeller		PA66-GF30	1	22	十字槽盘头自攻螺钉 Cross recessed pan head thread cutting screw	ST3.5×16	SUS304	4
4	机械密封 Mechanical Seal	LX-16	石墨/陶瓷/丁腈 Carbo/Ceramic/NBR	1	23	铭牌 Name Plate		铝箔不干胶 Foil stickers	1
5	泵壳 Pump body		PP-GF20	1	24	十字盘头螺钉 Cross pan head screws	M5×10	SUS304	2
6	轴用密封 Shaft Washer		丁腈橡胶 NBR	1	25	弹簧垫圈 Spring Pad	Φ5	SUS304	2
7	前端 Flange		ADC12	1	26	平垫圈 Plain washer	Φ5	SUS304	2
8	轴承 Bearing	6202		2	27	十字槽盘头自攻螺钉 Cross recessed pan head thread cutting screw	ST3.5×16	A3钢(Steel)	2
9	转子总成 Rotor With Shaft			1	28	电缆压板 Cable Gland		ABS	1
10	定子总成 Stator			1	29	出线盒胶塞 Rubber plug wire nut		丁腈橡胶 NBR	1
11	机座 Motor House		ADC12	1	30	接线螺母 Junction box nut		阻燃ABS Flame Resistant ABS	1
12	密封垫 Seal pad		丁腈橡胶 NBR	1	31	电缆 Cable			1
13	出线盒下盒 Terminal Box		阻燃ABS Flame Resistant ABS	1	32	电机用波形弹簧 Motor Wave Spring	D35	65Mn	1
14	螺栓和螺钉平垫圈组合件 Bolt and washer assembly Screws	M4×8	A3钢(Steel)	4	33	后端 Back Cover		ADC12	1
15	O形圈 O-Ring	d120×2	丁腈橡胶 NBR	1	34	六角头螺栓 Hexagon bolt	M5×155	A3钢(Steel)	4
16	三柱接线板 Three-column strip		三聚氰胺+A3 Melamine+A3	1	35	风叶 Fan		PP	1
17	十字槽盘头自攻螺钉 Cross recessed pan head thread cutting screw	ST3.5×13	A3钢(Steel)	2	36	风叶固定环 Fan Fix Ring		A3钢(Steel)	1
18	电容 Capacitor	15uF/450V	P <sub>0</sub>	1	37	风罩 Fan Cover		PC+ABS	1
19	电容压块 Capacitor Gland		PA6	1	38	螺钉和平垫圈组合件 Assembly screws and flat washers	M4×8	SUS304	4